



MOBILE UV-C LIGHT

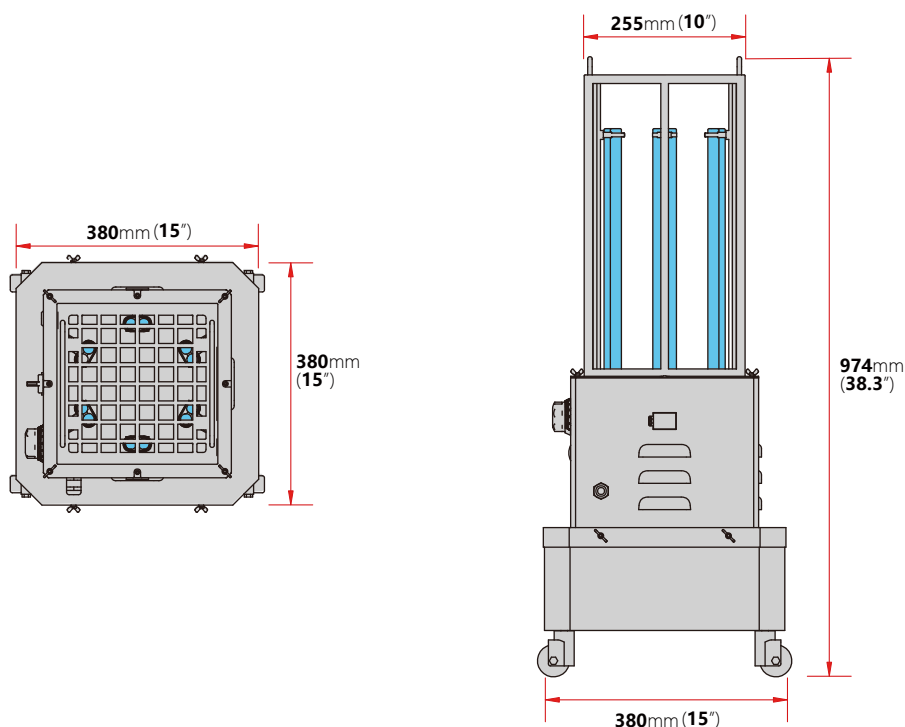
72W / 144W / 216W

APPLICATIONS

- Hospital
- School
- Apartment
- Office
- Fitness room
- Restaurant
- Shopping Mall
- GYM



DIMENSIONS



Shinetoos Lighting USA LLC

Add: 708-710 Armstrong Dr, Buffalo Grove, IL 60089
Ph: (224)567-8070 M: (847)899-1678
Email: Sales@shine2sportslighting.com

Jiaxing Shinetoos Lighting Co.,Ltd

Add: No.258, Xingchang Road, Xincheng Town, Xiuzhou District, Jiaxing, Zhejiang, China 314015
Tel: +86-573-8350-0001 Fax: +86-573-8350-0005
Mobile: +86-138-0961-6725/+86-138-1878-3129
Email: Sales@stledlights.com

Coverage Chart



Power	Sanitization Area	Time
72W	200ft ² / 20m ²	10 minutes
72W	300ft ² / 30m ²	20 minutes
72W	500ft ² / 50m ²	30 minutes



Power	Sanitization Area	Time
144W	300ft ² / 30m ²	10 minutes
144W	500ft ² / 50m ²	15 minutes
144W	1,000ft ² / 100m ²	30 minutes



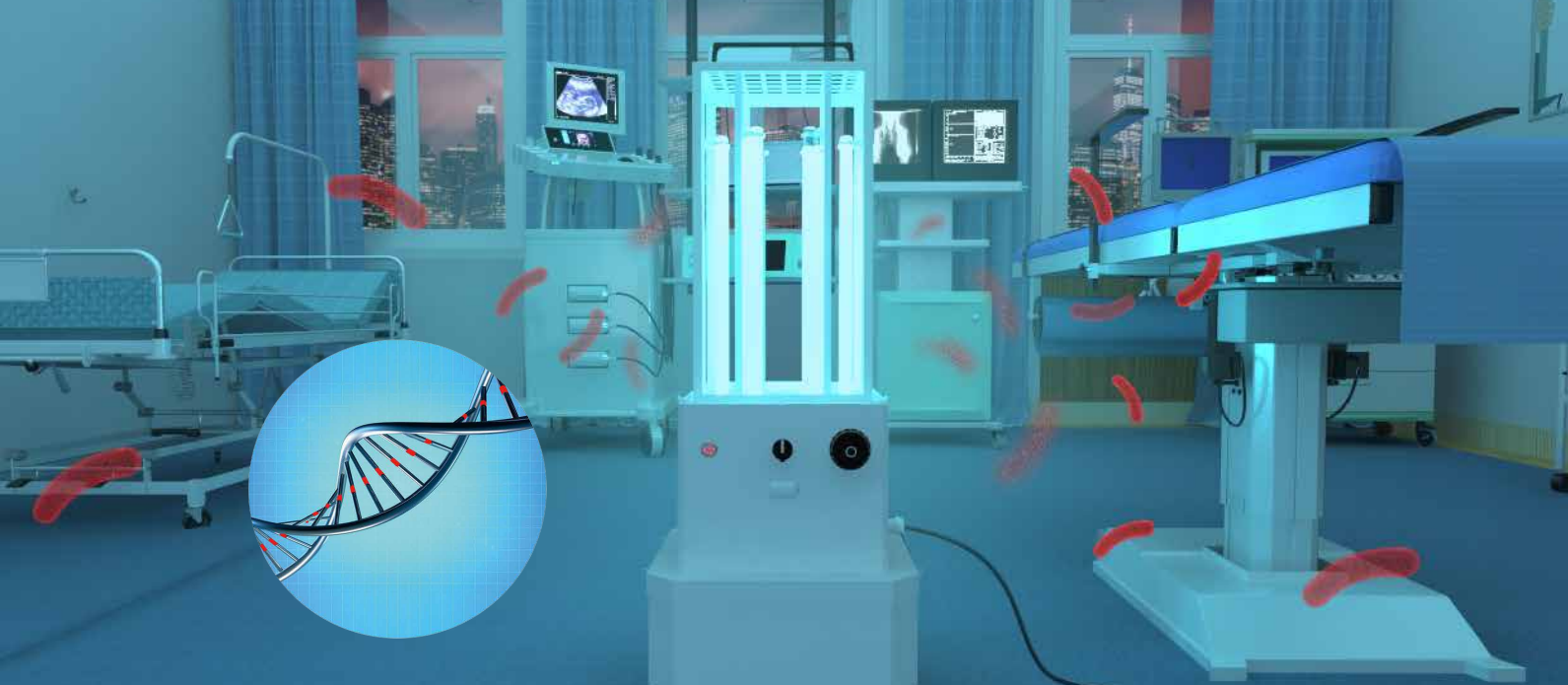
Power	Sanitization Area	Time
216W	500ft ² / 50m ²	10 minutes
216W	1,000ft ² / 100m ²	20 minutes
216W	1,600ft ² / 160m ²	30 minutes

Shinetoo Lighting USA LLC

Add: 708-710 Armstrong Dr, Buffalo Grove, IL 60089
Ph: (224)567-8070 M: (847)899-1678
Email: Sales@shine2sportslighting.com

Jiaxing Shinetoo Lighting Co.,Ltd

Add: No.258, Xingchang Road, Xincheng Town, Xiuzhou District, Jiaxing, Zhejiang, China 314015
Tel: +86-573-8350-0001 Fax: +86-573-8350-0005
Mobile: +86-138-0961-6725/+86-138-1878-3129
Email: Sales@stledlights.com



SPECIFICATIONS

Model Number	ST-UVC-72W	ST-UVC-144W	ST-UVC-216W
Watts	72W	144W	216W
Lamp Source	254nm UV-C flourescent lamp (Philips / Osram)		
Lamp Qty	2 lamps	4 lamps	6 lamps
Dimensions	15"-L x 15"-W x 38.3"-H 380mm-L x 380mm-W x 974mm-H		
Voltage	110-120V AC, 50/60Hz / 220-240V AC, 50/60Hz		
Single-lamp Watts	36W		
Total UV Watts	72W	144W	216W
Total UV Irradiance	220 $\mu\text{W}/\text{cm}^2$ @ 1Meter	440 $\mu\text{W}/\text{cm}^2$ @ 1Meter	660 $\mu\text{W}/\text{cm}^2$ @ 1Meter
Single-lamp UV Output	12W		
Total UV Output	24W	48W	72W
Lamp Lifespan	8,000hours		
Ballast	Electronic, PF>0.9		
Amps:	0.35A (230V) / 0.73A (110V)	0.67A (230V) / 1.41A (110V)	0.98A (230V) / 2.05A (110V)
Ambient Operating Temp	26.7 C / 80°F		
Materials	304 Stainless Steel (Standard) / Galvanized Metal (Optional)		
Mounting	Portable - (4) Wheels (Standard)		

Features

Short-wave Light
Full Protection
Delay Start
Ozone & Chemical Free
High Effective
Remote Ctrtol & Timer
Low Heat Output
EPA Est. No. 97623-CHN-1
1 Year warranty for UV-C Lamps,
2 Years Warranty for Non-electric
parts and Fan

PLEASE NOTE: UVC light is harmful for eyes and skin which can cause temporary or permanent loss of vision and temporary acute redness or ulceration. UVC LIGHT MUST BE invisible during operation, DO NOT operate the UVC light equipment in any non-isolated environment. NEVER LOOK DIRECTLY AT THE UVC LIGHT OR SANITIZATION TARGET AREA. DO NOT TOUCH THE LAMPS WITH BARE HANDS. WARNING SIGN MUST SET UP DURING OPERATION.

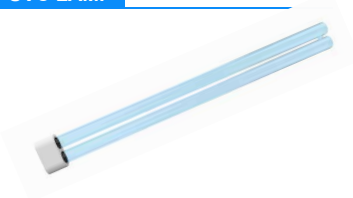
Customized Services Availalbe

FAN

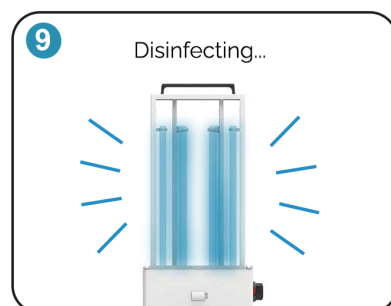
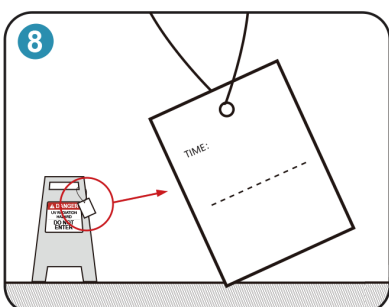
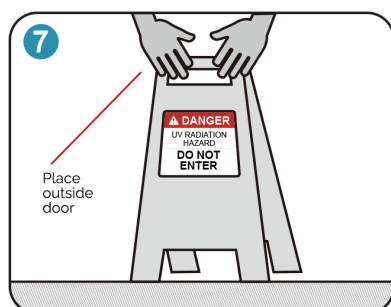
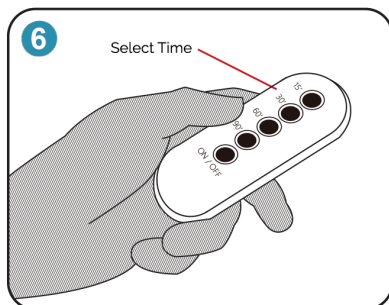
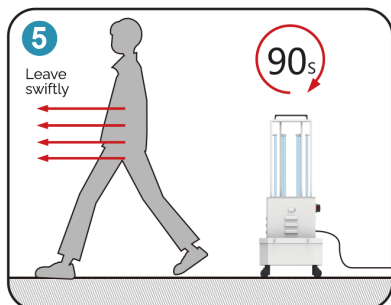
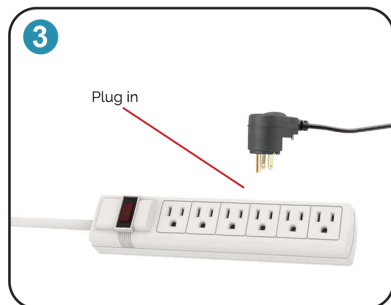
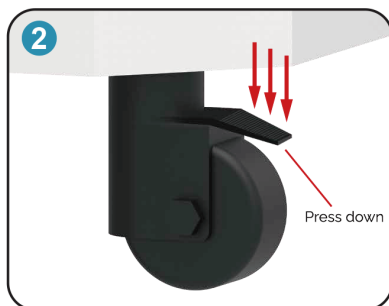
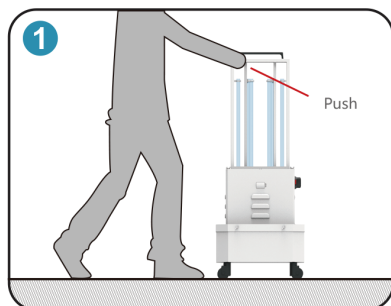


Fan: <49.7DB
Dimension:
 4.7"-W x 4.7"-D x 1.5"-H
 120mm-W x 120mm-D x 38mm-H
Rated Voltage: 12V
Rated Speed: 2,400rpm±10%
Life Expectance: 50,000hrs at 40 C

UVC LAMP



Lamp-Base: 2G11
Rated Power: 36W
UV-C Irradiance: 12W



Product Details

Step 1
Push the UV-C lamp to the appropriate location in the sanitization area, and then close all doors and Windows to seal the sanitization area

Step 2
Make sure trolley is stationary by pressing down the wheel lock

Step 3
Plug into power source

Step 4
Turn on power button, turn the selector to the right, and set sanitization time

Step 5
Use the remote to set sanitization time. First push the ON/OFF button - you will hear a "ding" - then choose your required time

Step 6
After setting, the UV-C lamp automatically sets a 90-second "Leave" time for all users to evacuate out of the treatment area. All exits must be securely closed within this period

Step 7
Warning signs should be dated and placed outside at all entrances

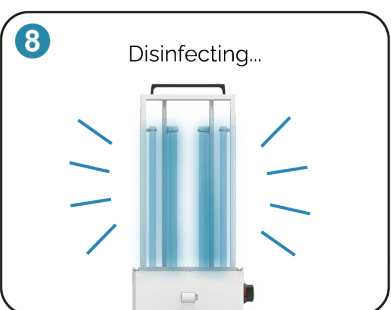
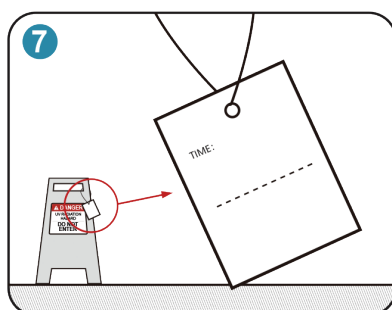
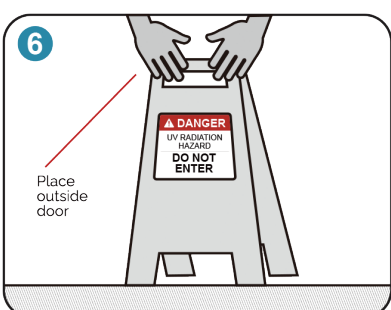
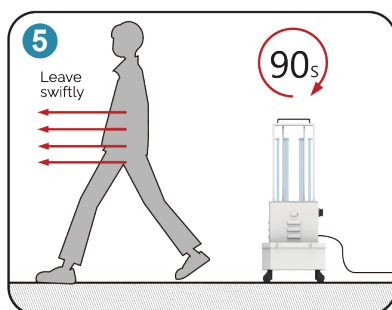
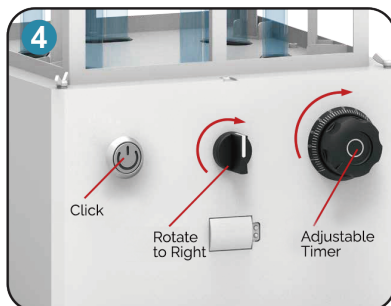
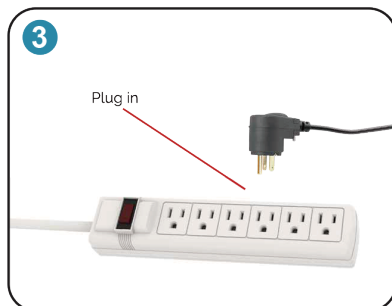
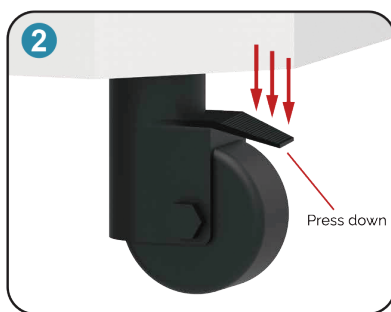
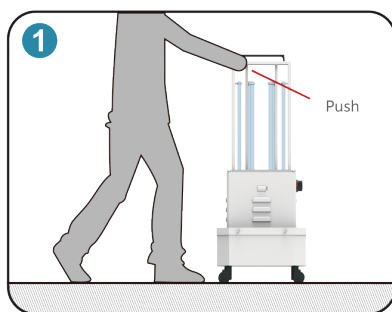
Step 8
Write down the time you need to sanitize

Step 9
Do not enter the area during sanitization to prevent eye and skin damage

Step 10
After sterilisation, push power button off and turn the selector switch back to upright

* After sanitization is complete, wait at least 5 minutes before entering the area

* Do not touch the UV-C lamp at all



Product Details

Step 1

Move the UV-C lamp to the appropriate location to be treated, then close all doors and windows to seal the sanitization area

Step 2

Fix the four wheels on the UV-C lamp

Step 3

Plug into power source

Step 4

Turn on power button, turn the selector to the right and set required sanitization time

Step 5

After setting, the UV-C lamp automatically sets a 90-second "Leave" time for all users to evacuate out of the treatment area. All exits must be securely closed within this period

Step 6

Warning signs should be dated and placed outside at all entrances

Step 7

Write down the time you need to sanitize

Step 8

Do not enter the area during sanitization to prevent eye and skin damage

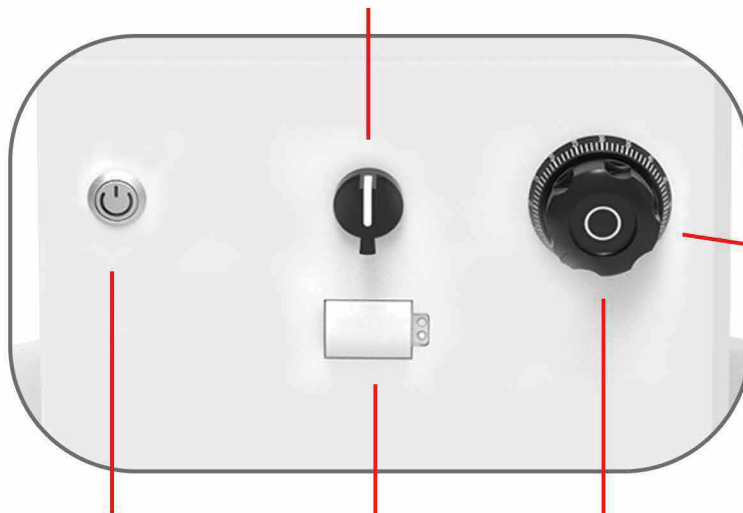
Step 9

After sanitization, push the power button and turn back the selector switch

* After sanitization is complete, wait at least 5 minutes before entering the area

* Do not touch the UV-C lamp at all

CONTROL



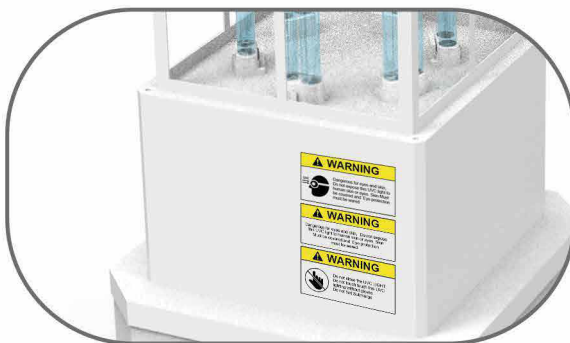
ON-OFF

MOTION
SENSORS

TIMER



Warning Sign Included



**Remote / Smart control timer:
10 / 20 / 30 / 40 / 50 / 60Minutes**



Do NOT present in the operation area where warning signs are set up to block off the area.

Safety Tips

This unit is very powerful , please always
shine the light down and away from you,
**DO NOT LOOK AT THE LIGHT OR SHINE ON
EXPLOSED SKIN.**



Adults

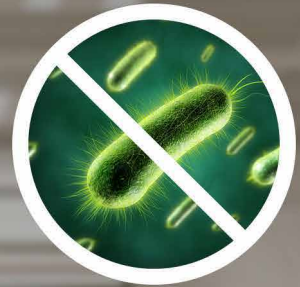
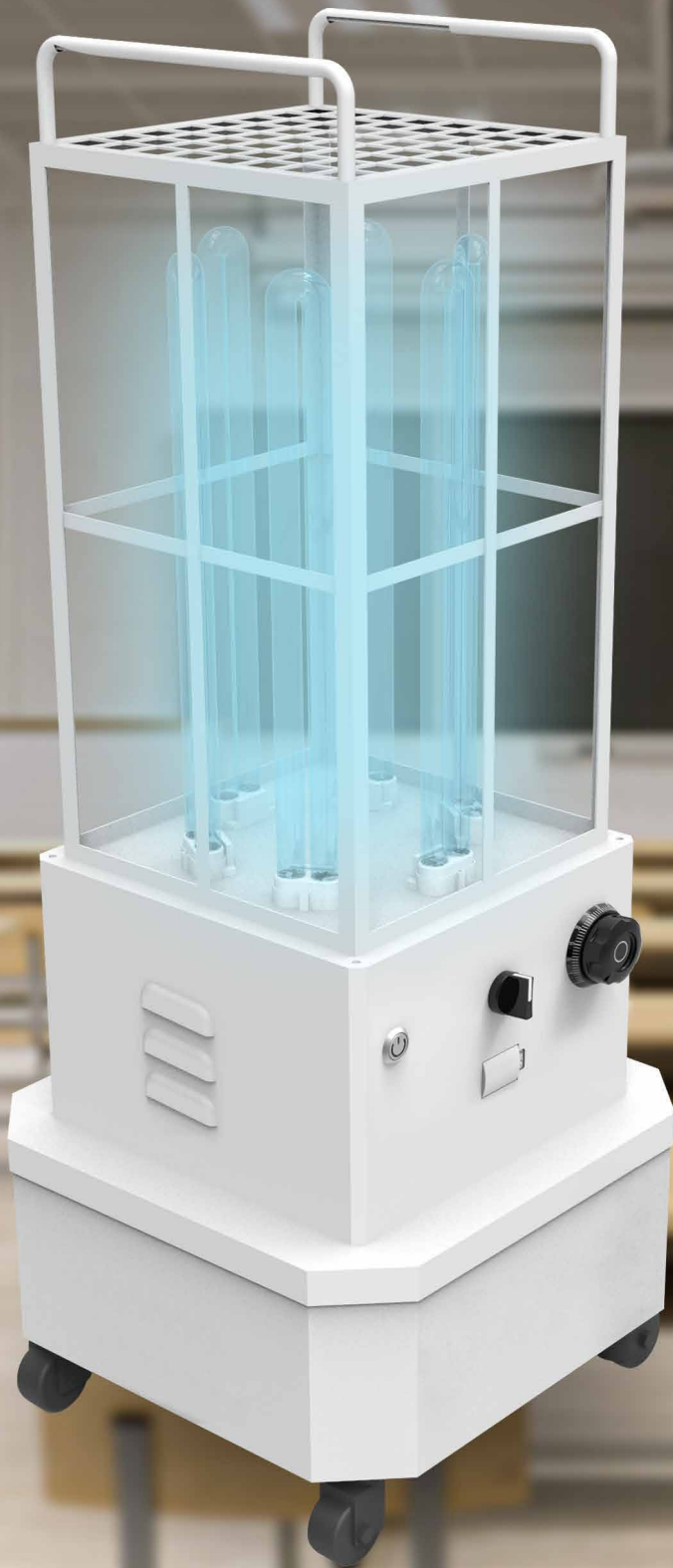


Children



Pets

**Sanitization rate is up to
99% of inactive viruses, bacteria, mold**



Bacteria



Germs



Mites

Applications



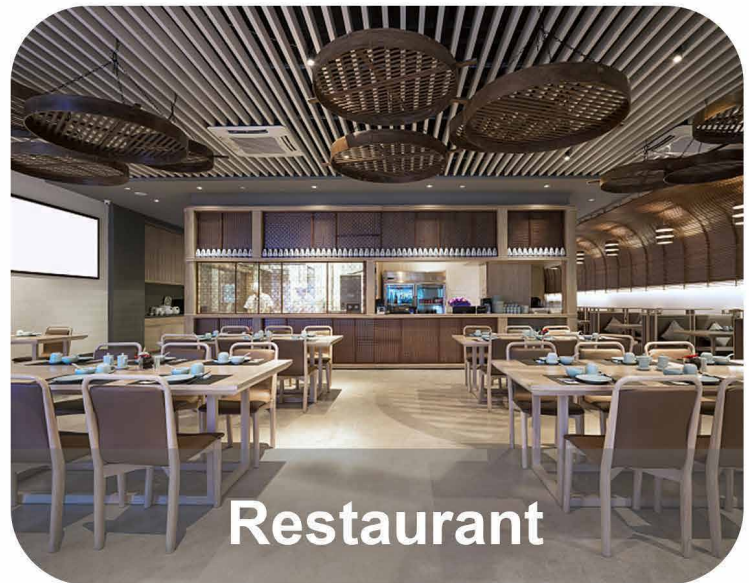
School



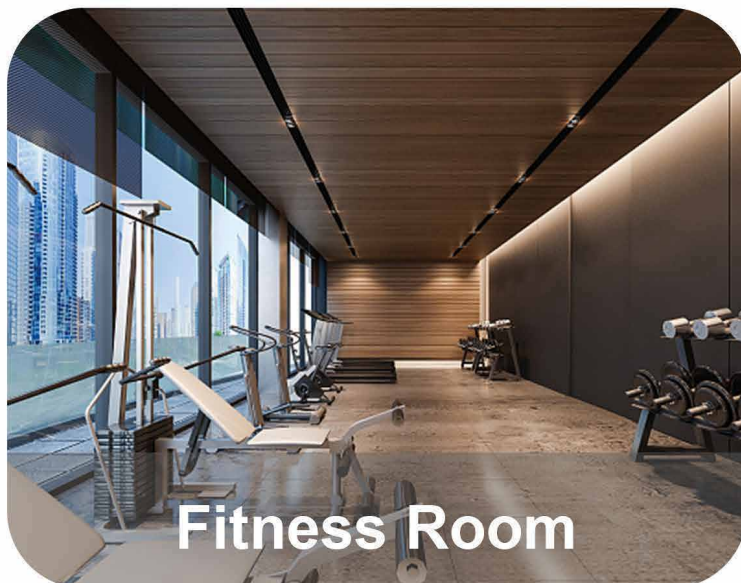
Hospital



Meeting Room



Restaurant



Fitness Room



GYM

PACKAGE CONTENTS

